

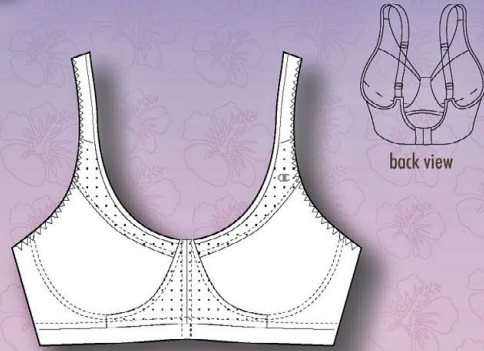


### Smoothsport™ Sports Bra.



Suggested Retail: \$42.00  
Cups: 60% Polyester, 40% Cotton.  
Mesh: 100% Polyester.  
Back: 83% Nylon, 17% Lycra® Spandex.  
Soft cup styling w/stabilizing rib band elastic.  
Wicking performance fabrication for moisture management. Mesh panels for additional ventilation.  
Sizes: 34-38B, 34-42C, 34-42D, 34-42DD

019 - IS2100F



### Intershape™ Sports Bra.



Suggested Retail: \$42.00  
Cups: 60% Polyester, 40% Cotton.  
Mesh: 100% Polyester.  
Back: 83% Nylon, 17% Lycra® Spandex.  
Non-stretch molded cups for additional motion control Underwire styling with triple layer underwire channel for a soft cushion against the skin & to avoid poke through Wicking performance fabric cups for a dry, comfortable fit Mesh panels for additional ventilation.  
Sizes: White: 34-38B, 34-42C, 34-42D, 34-42DD  
Sizes: Beige: 34-38B, 34-40C, 34-40D, 34-38DD

141 - IS2100F



### Action Tech® Sports Bra.



Suggested Retail: \$45.00  
Body: 43% Cotton, 43% Polyester, 14% Lycra® Spandex.  
Body: White Mesh - 90% Nylon, 10% Lycra® Spandex.  
Lining: 90% Polyester, 10% Lycra® Spandex.  
Compression style, Wicking performance fabric, T-back with signature keyhole loop.  
Sizes: S - XL

029 - IS2250F



### Shape 2000 T-Back Sports Bra.



Suggested Retail: \$55.00  
Body: 75% Nylon, 25% Lycra® Spandex.  
Lining: 89% Polyester, 11% Lycra® Spandex.  
Cups: 100% Polyester.  
Fully constructed inner bra with special cup construction using Champion's space air technology. Stabilized straps for added support.  
Sizes: fashion colours: B34-38, C34-38  
Sizes: basic colours: A32-36, B32-38, C34-38

1050 - IS2750F



### Comfort Strap Underwire Sports Bra.



Suggested Retail: \$45.00  
Cups: 60% Polyester, 40% Cotton.  
Mesh: 100% Polyester.  
Back: 83% Nylon, 17% Lycra® Spandex.  
Patented wide cushioned shoulder straps.  
Non-stretch molded cups for additional motion control. Underwire styling w/triple layer channel for a soft cushion against the skin and to avoid poke through. Mesh panels for additional ventilation.  
Sizes: 34-38B, 34-42C, 34-42D, 34-42DD

161 - IS2250F

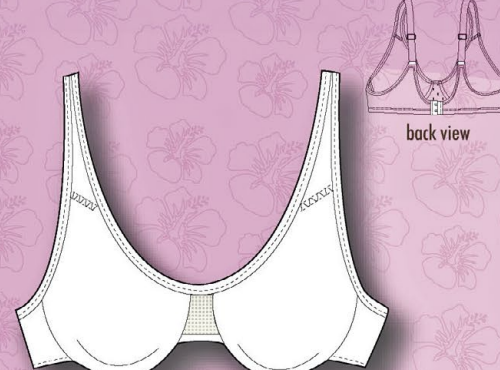


### Double dry™ Everyday Bra Underwire.



Suggested Retail: \$50.00  
Body: 75% Nylon, 25% Lycra® Spandex.  
Mesh: 89% Nylon, 11% Spandex.  
Molded cups for a seamless finish that will not chafe.  
Underwire, unframed styling for support and shape definition. Adjustable straps & back closure for a customized fit. Front & back mesh inserts for added comfort.  
Sizes: 34-40B, 34-40C, 34-40D

1123 - IS2500F

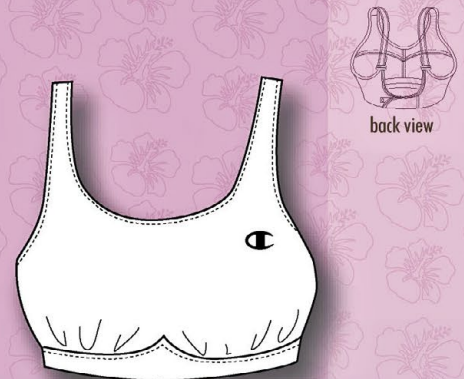


### Action shape™ Sports Bra.



Suggested Retail: \$60.00  
Body: 43% Cotton, 43% Polyester, 14% Lycra® Spandex.  
Cups: 60% Polyester, 40% Cotton.  
Wings: 86% Nylon, 14% Lycra® Spandex.  
Fully constructed inner bra with rigid molded cups.  
Stretch non-slip straps with Velcro hook closure.  
Inner wicking performance fabric.  
Sizes: 32-42 C/D, 32-42 D/DD

072 - IS3000F

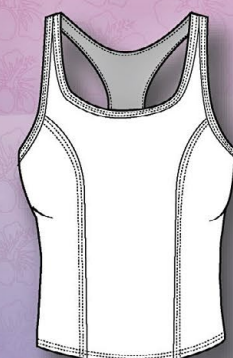


### Shape 2000 Long Top.



Suggested Retail: \$65.00  
Body: 75% Nylon, 25% Lycra® Spandex.  
Lining: 89% Polyester, 11% Lycra® Spandex.  
Cups: 100% Polyester.  
Fully constructed inner bra with special cup construction using Champion's space air technology. Stabilized straps for added support.  
T-back styling. front princess seams.  
Sizes: basic colours: A32-36, B32-36, C34-36

1050 - IS2750F



### Performance Double Dry™ Everyday Bra Softcup.



Suggested Retail: \$50.00  
Body: 75% Nylon, 25% Lycra® Spandex.  
Mesh: 89% Nylon, 11% Spandex.  
Molded cups for a seamless finish that will not chafe.  
Soft cup styling w/wide under bust band for additional support. Action V-back closure.  
Adjustable straps. Ventilating mesh inserts.  
Sizes: 34-40B, 34-40C, 34-40D

1121 - IS2500F



### Double Dry™ Inner Frame Bra.



Suggested Retail: \$60.00  
75% Nylon, 25% Lycra® Spandex.  
Double Dry™ fabric for moisture management.  
Seam-free molded cups. Triple layer underwire channel. Free floating underwire frame for hidden support that moves with you. Adjustable straps & closure for a customized fit.  
Attribute: Champion® Double Dry™ logo  
Sizes: 34-38B, 34-40C, 36-40D

1216 - IS3000F



### Double dry™ Seamless Sports Bra.



Suggested Retail: \$55.00  
Body: 88% Nylon, 12% Lycra® Spandex.  
Lining: 80% Nylon, 20% Lycra® Spandex.  
Knitted in bra cups.  
Sizes: S/M, M/L, L/XL

2022 - IS2750F

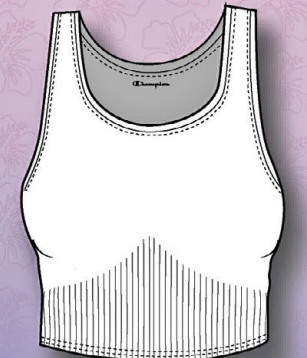


### Double dry™ Seamless Cross Trainer



Suggested Retail: \$60.00  
Body: 94% Nylon, 6% Spandex.  
Lining: 91% Nylon, 9% Spandex.  
Full inner bra with knitted-in undercup panels.  
Sizes: S/M, M/L, L/XL

2132 - IS3000F



Champion

Technical icon legend of features found in Champion® garments.

**MED MCR** Champion® is unlike any other sports bra you've tried before! With varying body types, Champion's® exclusive Motion Control Requirements™ (MCR®) line of sports bras accommodate the requirements for women of all sizes. Tested and approved!  
**MEDIUM MCR® - FOR LESS INTENSE ACTIVITY THAT STILL REQUIRES SUPPORT, COMFORT & BOUNCE CONTROL, ITEMS WITH A "MEDIUM" MCR ARE IDEAL FOR BICYCLING, WALKING, WEIGHT TRAINING, IN-LINE SKATING, GOLF, & SKIING**

**HIGH MCR** Champion® is unlike any other sports bra you've tried before! With varying body types, Champion's® exclusive Motion Control Requirements™ (MCR®) line of sports bras accommodate the requirements for women of all sizes. Tested and approved!  
**HIGH MCR® - FOR INTENSE ACTIVITIES THAT PROVIDE MAXIMUM SUPPORT & COMFORT DURING ACTIVITIES SUCH AS BASKETBALL, RUNNING, STEP AEROBICS, HORSEBACK RIDING, SOCCER, MARTIAL ARTS & MOUNTAIN BIKING.**

**CLASSIC COMPRESSION** - USES THE ELASTICITY OF FABRIC FOR MAXIMUM SUPPORT & COMFORT.

**CHAFE RESISTANT** - FLATLOCK STITCH FABRIC COMPONENTS HELP ELIMINATE CHAFING.

**BREATHABLE** - THE ABILITY TO TRANSFER BODY HEAT AND TINY MOISTURE MOLECULES THROUGH FABRIC.

**UNDERWIRE** - SUPPORT THAT USES A PLASTIC-COATED WIRE TO HELP PREVENT "POKE THROUGH", ENSURING LONG & COMFORTABLE WEAR.

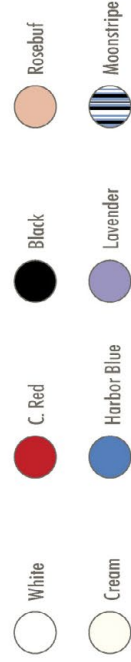
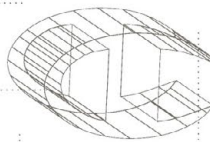
**WICKING** - WICKS MOISTURE AWAY FROM THE BODY THROUGH STYLES LINED WITH TREATED FABRICS OR MADE WITH WICKING FABRIC.

**STRETCH** - STRETCH & RECOVERY PROPERTIES PROVIDED THROUGH THE USE OF LYCRA® SPANDEX.

**NATURAL CONTOUR** - FEATURES MOLDED CUPS THAT CONFORM TO A WOMAN'S NATURAL BUSTLINE FOR A SILHOUETTE THAT IS BOTH SLEEK & SCULPTED.

**OVERLOCK** - DECORATIVE METHOD OF FINISHING A SEAM, WHICH PREVENTS THE FABRIC FROM FRAYING.

**SHOCK ABSORBANT** - CUSHION MAX™ ENHANCED FABRICATION TO PROVIDE SUPERIOR SHOCK ABSORPTION



\*Champion® and "C" logo are used under license by Champion® Athleticwear. "Champion" et le logo "C" sont utilisés sous licence par Champion Athleticwear.

Lyra® is a registered trademark of Invista.

Special Edition Catalog  
 Sports Bras & Workout Tops  
 Champion

We not only invented sports bras... we perfected them.  
 Sportswear for women.  
 Because working out, being active or just being comfortable means a lot to you. Champion® fits, for any activity or occasion. See selection inside:

Women's Athletic Socks.

**IS650F - IS700F - IS650F**

Suggested Retail \$13.00  
 Suggested Retail - Extra Low Ped & Crew \$14.00  
 Suggested Retail - Multi-Pak Ped \$13.00  
 crew, 1/4 crew, mid crew: 80% Ring spun Cotton, 17% Nylon, 2% Natural latex rubber, 1% Polyester decoration.  
 Ped Socks: 80% Ringspun Cotton, 18% Nylon, 1% Natural latex rubber, 1% Polyester decoration.  
 3 pairs per pack.  
 Made in Canada.  
 Women's Fit Sizes 5-9



CH231BBB  
1/4 CREW

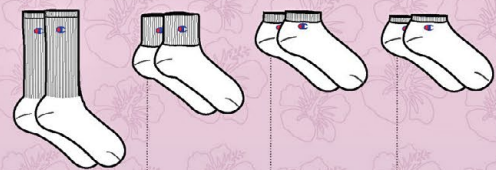
CH233BBB  
PED



DAWN

PINK

WHITE



WHITE

H. GREY

LAVENDER

CH230AAA  
CREW

CH231AAA  
1/4 CREW

CH233AAA  
PED

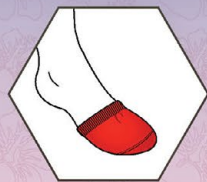
CH235AAA  
EXTRA LOW PED

CH238BBB  
"MULTI-PACK" PED

Footlet Socks.

**CH239 - IS450F**

Suggested Retail \$9.00  
 80% Ring spun Cotton, 18% Nylon, 1% Natural latex rubber, 1% Polyester decoration.  
 Attribution: SILVER.  
 3 pairs per pack.  
 Made in Canada.  
 Women's Fit Sizes 5-9



DAWN

WHITE/SCARLET/DAWN

More inside!

Champion

Champion

CUSTOMER SERVICE - CANADA  
 188 WILKINSON ROAD, UNIT #4  
 BRAMPTON, ON L6T 4W9  
 TEL: (905) 460-8638 FAX: (905) 460-8642  
 TOLL FREE: 1-800-665-3970 TOLL FREE FAX: 1-800-662-3577

WWW.CHAMPIONCAN.COM

